



Catalogue



Công ty TNHH Phi Thường (WIZARD CO.,LTD)

028 3 883 1220

www.wizard.com.vn

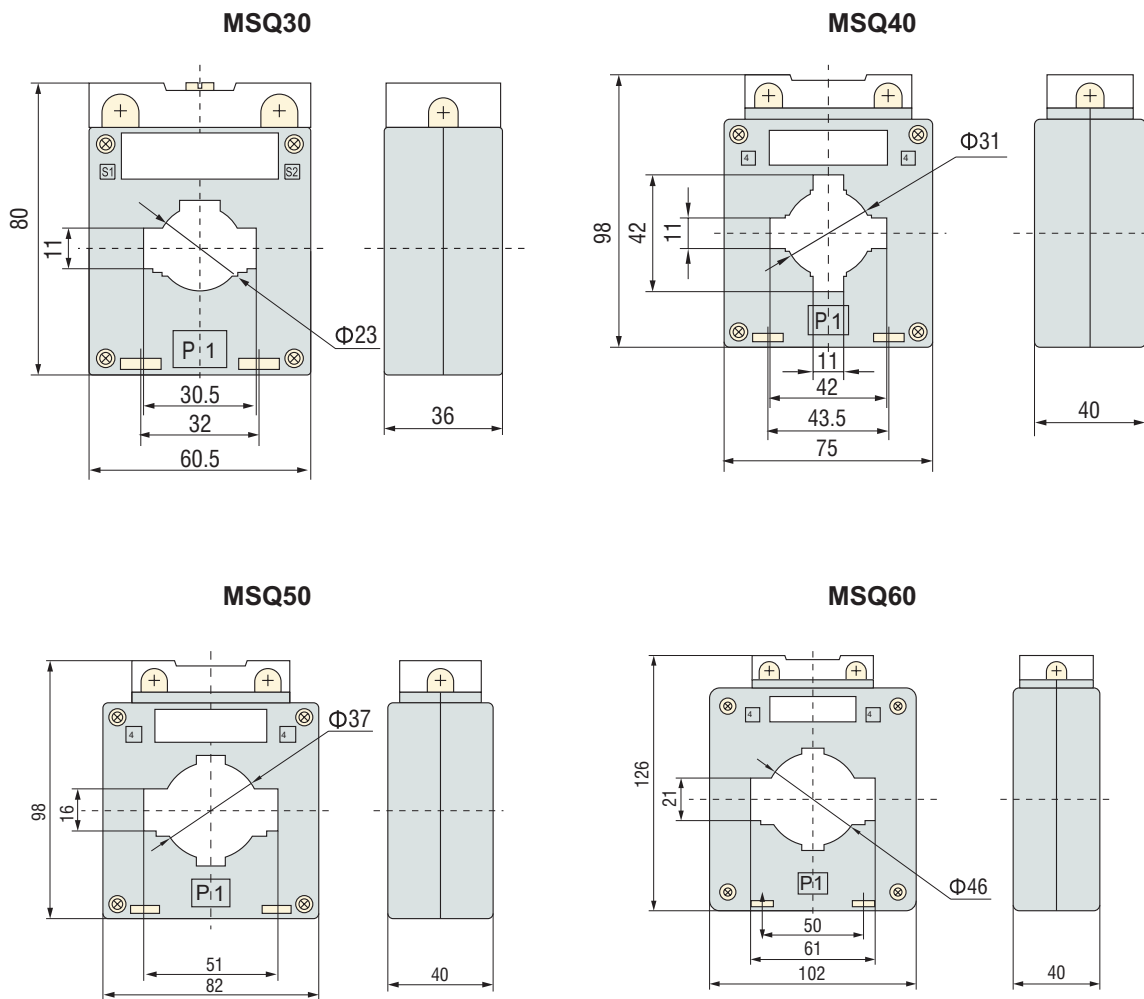
2E3 Đường DD2, KDC An Sương,
P.Tân Hưng Thuận, Q12, Tp.Hồ Chí Minh



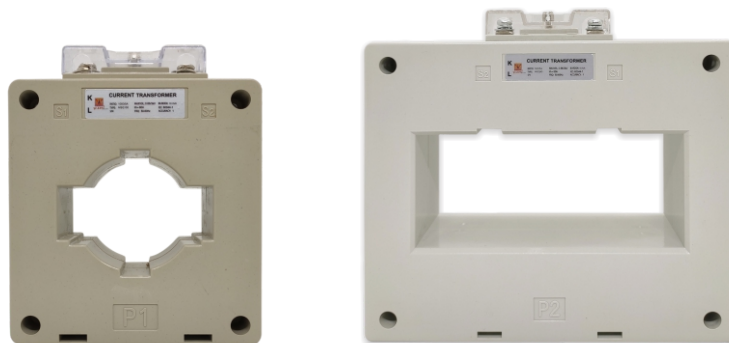
Specification (Biến dòng đo lường)



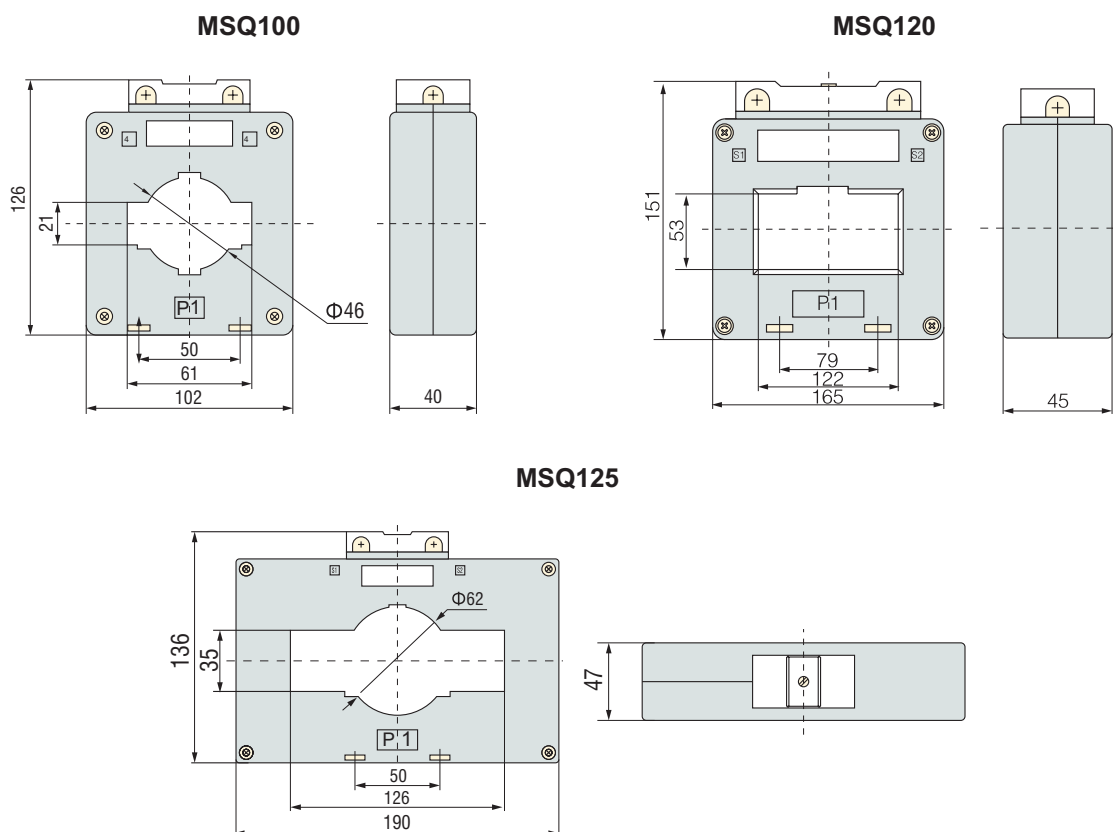
Models	Ratio (A)	Accuracy	Burden (VA)
MSQ30	50 - 75/5	Class 3.0	1.0
	100 - 150/5	Class 1.0	1.5
	200 - 300	Class 1.0	2.5
MSQ40	400/5	Class 1.0	5
	500/5	Class 1.0	5
MSQ50	600/5	Class 1.0	5
	800/5	Class 1.0	5
MSQ60	600/5	Class 1.0	5
	800/5	Class 1.0	5



Specification (Biến dòng đo lường)



Models	Ratio (A)	Accuracy	Burden (VA)
MSQ100	1000/5	Class 1.0	10
	1200/5	Class 1.0	10
	1600/5	Class 1.0	10
MSQ120	1600/5	Class 1.0	15
	2000/5	Class 1.0	15
	2500/5	Class 1.0	15
	3000/5	Class 1.0	15
MSQ125	2000/5	Class 1.0	15
	2500/5	Class 1.0	15
	3000/5	Class 1.0	15
	4000/5	Class 1.0	15



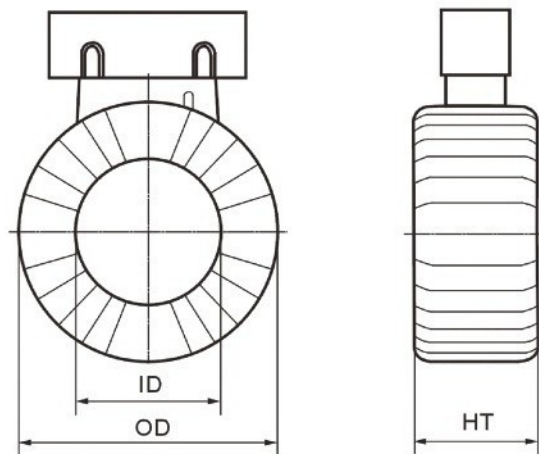
Specification (Biến dòng đo lường)

MR - Series:



Models	Ratio (A)	Accuracy	Burden (VA)
MR40	50 - 75	Class 3.0	1.5
	100 - 150	Class 1.0	1.5
	200 - 300	Class 1.0	2.5
MR60	400/5	Class 1.0	5
	500/5	Class 1.0	5
	600/5	Class 1.0	5
MR85	800/5	Class 1.0	5
	1000/5	Class 1.0	10
	1200/5	Class 1.0	10
MR125	1600/5	Class 1.0	10
	2000/5	Class 1.0	15
	2500/5	Class 1.0	15
	3000/5	Class 1.0	15
	4000/5	Class 1.0	15

Outline drawing:



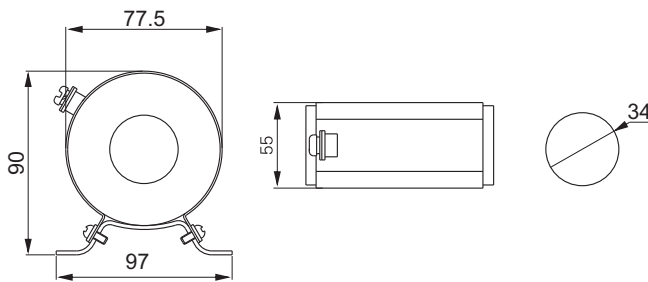
Specification (Biến dòng đo lường)

RCT - Series:

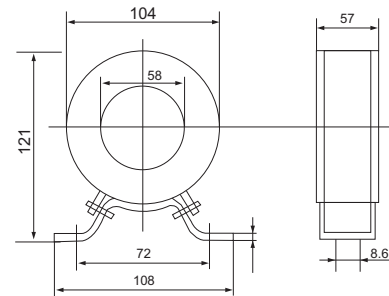


Models	Ratio (A)	Accuracy	Burden (VA)
RCT-35	50 - 75/5	Class 3.0	1.5
	100 - 150/5	Class 1.0	2.5
	200 - 300/5	Class 1.0	2.5
RCT-58	400/5	Class 1.0	5
	500/5	Class 1.0	5
	600/5	Class 1.0	5
RCT-90	800/5	Class 1.0	5
	1000/5	Class 1.0	5
	1250/5	Class 1.0	10
RCT-110	1600/5	Class 1.0	10
	2000/5	Class 1.0	15
	2500/5	Class 1.0	15
	3000/5	Class 1.0	15

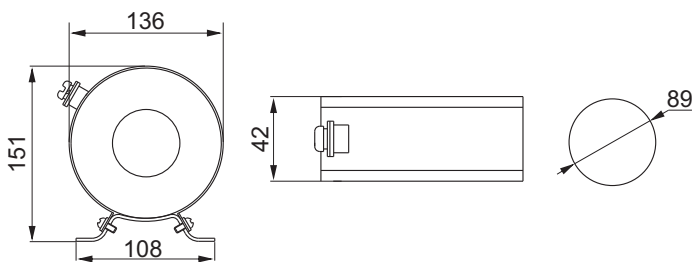
RCT-35



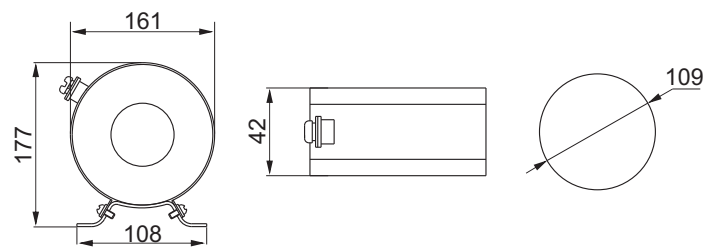
RCT-58



RCT-90



RCT-110



Specification (Biến dòng bảo vệ)

PR - Series:



Protective current transformers are required to operate over a range of current many times the circuit rating and is frequently subjected to conditions greatly exceeding those which it would be subjected to as a measuring current transformer. When a current transformer is used to energise a protective relay, it must maintain its characteristic ratio up to some multiple of its rated current.

Model	Specification	OD	ID	HT
PR 5P10 15VA	100/5A	100	34	180
PR 5P10 15VA	150/5A	100	34	130
PR 5P10 15VA	200/5A	100	34	110
PR 5P10 15VA	250/5A	96	45	110
PR 5P10 15VA	300/5A	96	45	110
PR 5P10 15VA	400/5A	96	45	90
PR 5P10 15VA	500/5A	102	62	110
PR 5P10 15VA	600/5A	110	68	88
PR 5P10 15VA	800/5A	120	62	22
PR 5P10 15VA	1000/5A	120	85	68
PR 5P10 15VA	1200/5A	123	82	60
PR 5P10 15VA	1600/5A	123	82	68
PR 5P10 15VA	2000/5A	123	125	40
PR 5P10 15VA	2500/5A	178	125	40
PR 5P10 15VA	3000/5A	178	125	40
PR 5P10 15VA	4000/5A	182	120	35